



e-ISSN: 2319-8753 | p-ISSN: 2347-6710

IJIRSET

International Journal of Innovative Research in
SCIENCE | ENGINEERING | TECHNOLOGY



INTERNATIONAL JOURNAL OF INNOVATIVE RESEARCH

IN SCIENCE | ENGINEERING | TECHNOLOGY

Volume 11, Issue 5, May 2022

ISSN INTERNATIONAL
STANDARD
SERIAL
NUMBER
INDIA

Impact Factor: 8.118

A Brief Study on Self Curing of Concrete

Kasipeta Santosh¹, C Nagarjuna^{M.Tech. 2}

M.Tech, Dept. of CIVIL, SSSS Engineering College, Anantapuramu, Affiliated to JNTUA, AP, India¹

Assistant Professor, Dept. of CIVIL, SSSS Engineering College, Anantapuramu, Affiliated to JNTUA, AP, India²

ABSTRACT: Curing of concrete is maintaining satisfactory moisture content in concrete during its early stages in order to develop the desired properties. However good curing is not always practical in many cases. Therefore the need to develop self-curing agents attracted several researchers. The concept of several self-curing agents to reduce water evaporation from concrete. And hence increase the water retention capacity of concrete compared to conventional concrete. It was found that water soluble polymers can be used as self-curing agents in concrete. Concrete incorporating self-curing agents will represent a new trend in concrete construction in the new millennium. The aim of this investigation is to evaluate the use of water-soluble polymeric glycol as self curing agents. the use of self-curing admixture curing admixtures is very important from the point of view that the water resources are getting valuable every day (ie; each 1 m³ of concrete require about 3 m³ of water for construction. Most of which is for curing). The benefit of self -curing admixtures is more significant in desert areas where water is not adequately available. In this study the mechanical properties of self-curing at different percentages of poly ethylene glycol will be evaluated and compared with conventional concrete specimen.

I. INTRODUCTION

Self-curing or internal curing is a technique that can be used to provide additional moisture in concrete for more effective hydration of cement and reduced self-desiccation. When concrete is exposed to the environment evaporation of water takes place and loss of moisture will reduce the initial water cement ratio which will result in the incomplete hydration of the cement and hence lowering the quality of the concrete. Various factors such as wind velocity, relative humidity, atmospheric temperature, water cement ratio of the mix and type of the cement used in the mix. Evaporation in the initial stage leads to plastic shrinkage cracking and at the final stage of setting it leads to drying shrinkage cracking. Curing temperature is one of the major factors that affect the strength development rate. At elevated temperature ordinary concrete losses its strength due to the formation of the cracks between two thermally incompatible ingredients, cement paste and aggregates.

The benefit of self-curing admixtures is more significant in desert areas (e.g. Rajasthan) where water is not adequately available. Curing is the most important step in concrete construction. Lack of curing has significant impact on concrete strength and durability. Self--curing concrete is designed to hold water and reduce water evaporation while increasing water retention capacity. Hydrophilic water--soluble polymers can be used as self--curing agents in concrete as they can absorb water and keep the surrounding medium moist so that water can be used later by cement.

Curing is the process of controlling the rate and extent of moisture loss from concrete during cement hydration. It may be either after it has been placed in position there by providing time for the hydration of the cement to occur. Since the hydration of cement does take time – days, and weeks rather than hours – curing must be undertaken for a reasonable period of time if the concrete is to achieve its potential strength and durability. The purpose of this project is to study the effect of PVA (Poly Vinyl Alcohol, a water retaining alcohol) in curing process of concretes.

II. LITERATURE REVIEW

Nagesh Tatoba and Suryawanshi has studied on assessment of the properties of Self-Cured Concrete. In this study Compressive and tensile strength of self-curing concrete for 7 and 28days is found out and compared with conventional concrete of similar mix design. The durability of self curing concrete is found out by exposing concrete cubes to chloride environment and effect of the same on strength of cubes is determined by finding out compressive strength of cubes. The results indicated that Water retention for the concrete mixes incorporating self-curing agent is higher

compared to conventional concrete mixes, as found by the weight loss with time. The result also showed that compressive, tensile and flexural strength of self curing concrete is found to be higher than conventional concrete.

Self-Curing Concrete was studied by Tarun R. Naik and Fethullah Canpolat. They studied on Curing is the maintaining of a satisfactory moisture content and temperature in concrete during its early stages so that desired properties (of concrete) may develop. Curing is essential in the production of concrete that will have the desired properties.

The strength and durability of concrete will be fully developed only if it is cured. No action to this end is required, however, when ambient conditions of moisture, humidity, and temperature are sufficiently favourable to curing. Otherwise, specified curing measures shall start as soon as required. To achieve good cure, excessive evaporation of water from a freshly cast concrete surface should be prevented. Curing can be performed in a number of ways to ensure that an adequate amount of water is available for cement hydration to occur. In this study the primary emphasis was placed upon an investigation of the effects of the replacement level of normal weight coarse aggregates by saturated lightweight ones, and the degree of water saturation of lightweight aggregate. These parameters provided the means to control the effectiveness of autogenous curing.

El-Sarayati St., Abbasia are studied on Self-curing concrete by using Water retention, hydration and moisture transport. Water retention of concrete containing self-curing agents is investigated. Concrete weight loss, and internal relative humidity measurements with time were carried out, in order to evaluate the water retention of self-curing concrete. Non-evaporable water at different ages was measured to evaluate the hydration. Water transport through concrete is evaluated by measuring absorption%, permeable voids%, water sorptivity, and water permeability. The water transport through self-curing concrete is evaluated with age. The effect of the concrete mix proportions on the performance of self-curing concrete were investigated, such as, cement content and w/c ratio.

Erik Schlangen and Senot Sangadji was studied on self healing concrete. Concrete is complex composite material which undergoes changes during its lifetime. To optimize its durability effectively healing intervention at the right time and location is needed. One of the proposed ideas at Micro lab TU Delft is to make a porous layer inside of concrete structure that can be infused with healing material. By studying bone structure we can mimic bone morphology and produce what we call 'porous network concrete'. PVA dissolving plastic was used to keep prefabricated porous concrete porous while self compacting concrete was casted around it. Tensile test was applied to create crack close to notch in the middle of sample height.

Then an epoxy-based healing material was filled into the porous layer to make it dense and seal the crack completely. The test results are discussed using image of longitudinally (vertical) cross section of sample to see how epoxy filled pore spaces and cracks. So far this new concept is patent pending.

Investigations and study on the effect of AR glass polymer fibres in self-compacting self-curing concrete was studied by S. U. Kannan ;Selvamony C. ; M. S. Ravi Kumar ; S. Basil Gnanappa. This experimental study is exposing the relationship between permeability and compression strength of AR Glass fibre-reinforced concrete. In addition, it inspects the influence of AR Glass fibre reinforcement on concrete permeability. The AR Glass fibres decrease permeability of specimens with increased volume of fibres. Here an attempt is made to study the permeability of super plasticised concrete with different types of fibres. The fibres are added at the percentages varying from 0.2% to 1.0% by weight of cement at intervals of 0.20%. To maintain a good workability, super plasticiser is added at the dosages of 0.8% by weight of cement. The dosage is arrived considering the workability and strength on simultaneous reduction of cement and water content ranging from 5% to 20% of the reference concrete. The experiment was conducted in a six cell permeability cell at the pressure of 10 kg/cm² for 100 hours. Water permeability test is conducted as per IS: 3085-1987 and it is found that on addition of fibres, the co-efficient of permeability of concrete is reduced considerably.

"Investigations On Self-Compacted Self-Curing Concrete Using Limestone Powder And Clinkers" was studied by Selvamony C. ; M. S. Ravikumar; S. Basil Gnanappa. In this study Self-Compacting concrete is a type of concrete that gets compacted under its self-weight. It's commonly abbreviated as SCC and defined as the concrete which can be placed and compacted into every corner of a formwork; purely means of its self-weight by eliminating the need of either external energy input from vibrators or any type of compacting effort. Self compactability and stability are susceptible to ternary effects of chemical and mineral admixture type and their content.

In this study, the effect of replacing the cement, coarse aggregate and fine aggregate by limestone powder (LP) with silica fume, quarry dust and clinkers respectively and their combinations of various proportions on the properties of

SCC has been compared. Fresh properties, flexural and compressive strengths and water absorption properties of Concrete were determined.

M. S. Ravi Kumar, Selvamony C., S. U. Kannan and S. Basil Gnanappa are studied by “Behaviour Of Self Compacted Self Curing Kiln Ash Concrete With Various Admixtures”. In this study, self-compacting concrete (SCC) has gained wide use for placement in congested reinforced concrete structures with difficult casting conditions. For such applications, the fresh concrete must possess high fluidity and good cohesiveness. The use of fine materials such as kiln ash can ensure the required concrete properties. The initial results of an experimental program aimed at producing and evaluating SCC made with high-volumes of kiln ash are presented and discussed. Ten SCC mixtures and one control concrete were investigated in this study. Fresh properties, flexural and compressive strengths of self compacted concrete were determined. The use of SF in concrete significantly increased the dosage of super plasticiser (SP). At the same 1 constant SP dosage (0.8%) and mineral additives content (30%), KA can better improve the workability than that of control and fine aggregate mixtures by (5 % to 45 %). However, the results of this study suggest that certain QD, SF and KA combinations can improve the workability of SCCs, more than QD, SF and KA alone. KA can have a positive influence on the mechanical performance at early strength development while SF improved aggregate-matrix bond resulting from the formation of a less porous transition zone in Concrete. SF can better reducing effect on total water absorption while QD and KA will not have the same effect, at 28 days.

III. DESIGN METHODOLOGY

In this Analysis an attempt has been made to study the effect of PVA on physical properties of concrete. The properties of concrete used, the procedure used for concrete mixing and tests conducted are represented in this chapter. The mixing has been done in the laboratory. The properties considered in this study are strength and workability.

The experimental Programme is broadly divided into following categories, viz,

1. Workability characteristics
 - a) Slump
 - b) Compaction factor test
2. Strength characteristics
 - a) Compression test
 - b) Split tensile test
 - c) Flexural test

IV. RESULTS AND DISCUSSION

Table: .1 Slump characteristics:

S:NO	% OF PVA	SLUMP VALUES	% VARIATION IN SLUMP
1.	0	56	0
2.	0.03	58	-
3.	0.06	62	-
4.	0.12	64	-
5.	0.24	56	0
6.	0.48	56	0

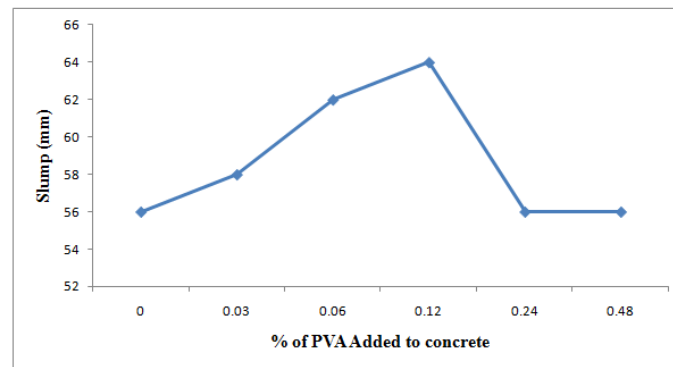


Fig 1 Graph showing the variation of slump values with % of PVA added to concrete.

Table 2 Compaction Values

Sr. No	% of PVA by the weight of cement	COMPACTION VALUE
1.	Conventional	0.9
2.	0.03	0.91
3.	0.06	0.91
4.	0.12	0.92
5.	0.24	0.92
6.	0.48	0.90

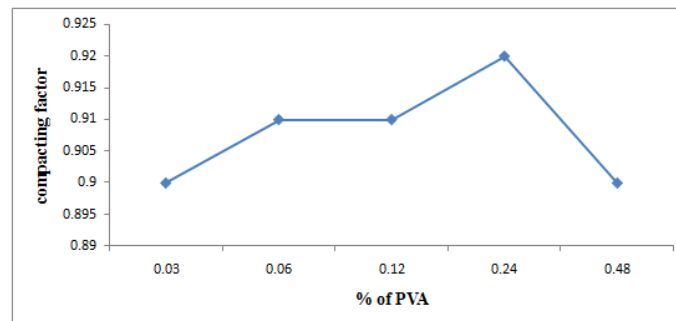


Fig 2 Graph showing the variation of compacting factor values with % of PVA.

Table 3. Compressive Strength of all Samples

SAMPLE NO.	% PVA	COMPRESSIVE STRENGTH AT 28 DAYS (N/mm ²)		
		28 days	14 days	7 days
Sample (a)	0	18.9	15.1	11.3
Sample (b)	0.03	16.7	14.9	10.8
Sample (c)	0.06	17.8	14.2	10.4
Sample (d)	0.12	18.6	14.8	11.1
Sample (e)	0.24	18.2	15.1	11.4
Sample (f)	0.48	17.4	13.9	10.4

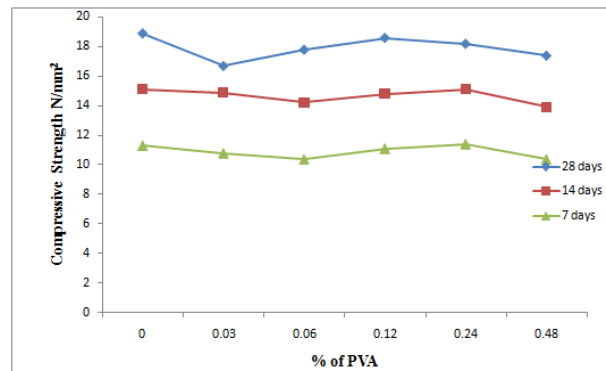


Fig 3. Graph Showing the variation between compressive strength and % of PVA

Table 4 split tensile Strength of all Samples:

SAMPLE NO.	% PVA	SPLIT TENSILE STRENGTH AT 28 DAYS (N/mm ²)		
		28 days	14 days	7 days
Sample (a)	0	3.69	3.48	2.16
Sample (b)	0.03	5.01	4.95	2.82
Sample (c)	0.06	5.20	4.98	2.97
Sample (d)	0.12	5.22	4.99	3.5
Sample (e)	0.24	6.01	5.12	3.72
Sample (f)	0.48	5.24	4.99	3.01

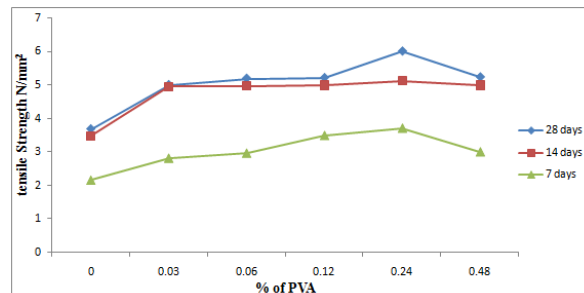


Fig 4Graph showing the variation between split tensile strength and % of PVA

Table 5 Flexural Strength of all Samples:

SAMPLE NO.	% PVA	FLEXURAL STRENGTH AT 28 DAYS (N/mm ²)		
		28 days	14 days	7 days
Sample (a)	0	5.85	5.61	5.42
Sample (b)	0.03	5.87	5.67	5.52
Sample (c)	0.06	6.54	6.12	6.08
Sample (d)	0.12	6.9	6.81	6.52
Sample (e)	0.24	7.0	6.9	6.7
Sample (f)	0.48	6.87	6.24	6.12

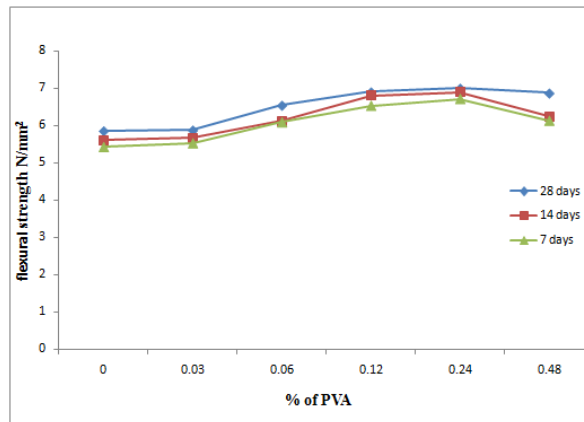


Fig 5 Graph showing the variation between flexural strength and % of PVA.

SLUMP

There's an increase in slump values of the concrete with develop furthermore of % of PVA through weight of cement up to zero.24% of PVA and then decreases with broaden in % of PVA. Best slump value of concrete is observed by means of addition of zero.24% PVA.

COMPACTING FACTOR

There is an expand in compacting component of the concrete with expand in %of PVA used brought as a self curing agent up to 0.24% of PVA and then decreases with expand in % of PVA. The compacting factor is best when the zero.24% of PVA by means of weight of cement used as a self curing agent.

COMPRESSIVE STRENGTHS

The compressive strengths of the concrete regularly increased with develop in %of PVA used as a self curing agent up to 0.24 % of PVA after which decreases with increase in % of PVA.

The compressive strength is highest when the zero.24 % of PVA by using weight of cement used as a self curing agent

SPLIT TENSILE STRENGTHS

The ability of a material to withstand a drive that tends to pull it aside. It is often expressed as the measure of the most important force that can be utilized on this means before the material breaks aside.

FLEXURAL STRENGTHS

Flexural force, often referred to as modulus of rupture, bend strength, or fracture force a mechanical parameter for brittle material, is defined as a material's potential to resist deformation under load.

IV. CONCLUSION

Addition of 0.24percentof PVA through weight of cement as a self curing agent offers the maximum compressive force. The concrete combine is extra achievable when 0.24% of PVA added to concrete mix by means of weight of cement because the slump values and compacting factor values are high when compared to traditional mix. The concrete mix all set by way of addition of0.24% of PVA with the aid of weight of cement can be used the place water is scarce and unavailable. Addition of 0.24 %PVA to the concrete mix by using the weight of cement offers the compressive strength identical because the traditional mix and extra conceivable than conventional combine. In the end the concrete combine



with 0.24% of PVA gives the pleasant self curing concrete combine with excessive compressive strength with high workability.

REFERENCES

- [1] Richart, F. E., Brandtzaeg, A. & Brown, R. L. (1928): A Study of the Failure of Concrete under Combined Compressive Stresses, Bulletin No. 185, University of Illinois, Engineering Experimental Station, Urbana, Illinois, USA, November, 104 pp. Schneider, S. P. (1998): "Axially Loaded Concrete-Filled Steel Tubes." Journal of Structural Engineering, Vol. 124, No. 10, October, pp. 1125-1138.
- [2] Tomii, M. Y., Yoshimura, K. & Morishita, Y. (1977): "Experimental Studies on Concrete Filled Steel Tubular Columns under Concentric Loading." Proc. Int. Colloquium on Stability of Structures Under Static and Dynam
- [3] Titford, E.M. The Golden Age of Concrete. London 1964 British Standards Institution. BS 1881: Part 2: 1970. Testing Fresh Concrete. British Standards Institution. BS 1881: Part 102: 1983. Testing Concrete. Method of determination of Slump.
- [4] Abrams, D.A. Experimental Studies of Concrete. Chicago 1918 Neville, A.M. Properties of Concrete 4th Edition. London 2005 Neville, A.M. & Brooks J.J. Concrete Technology 2nd Edition. London 1987 British Standards Institution. BS 8500-1: 2006. Method of Specifying and Guidance for the Specified.
- [5] British Standards Institution. BS EN 12350-2: 2009. Testing Fresh Concrete – Part 2: Slump Test.
- [6] American Society of Testing Materials. C143/C143M – 10a. Test for the Slump of Hydraulic Cement Concrete.
- [7] American Society of Testing Materials C94/C 94 M-07. Specification for Ready Mixed Concrete.
- [8] THE CONCRETE SOCIETY. Guide to the Construction of Reinforced Concrete in the Arabian Peninsula, the Concrete Society. London 2008
- [9] Radhikesh P. Nanda 1 , Amiya K. Das 2 , Moharana.N.C 1 Associate
- [10] Babu Shankar, N. and Md.Ali, 1992., Engineering Properties of Rock Flour. National Conference on Cement and Building Materials from Industrial Waste., pp 167-172.



INNO SPACE
SJIF Scientific Journal Impact Factor
Impact Factor: 8.118



ISSN INTERNATIONAL
STANDARD
SERIAL
NUMBER
INDIA



INTERNATIONAL JOURNAL OF INNOVATIVE RESEARCH

IN SCIENCE | ENGINEERING | TECHNOLOGY

 **9940 572 462**  **6381 907 438**  **ijirset@gmail.com**



www.ijirset.com

Scan to save the contact details